



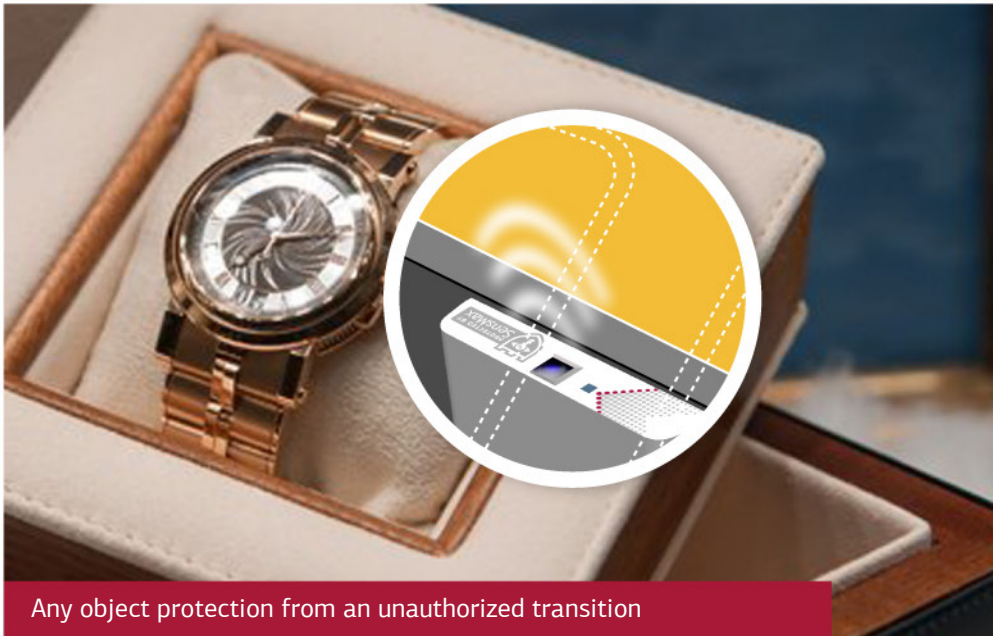
))) Sense of security together with SensGuard

SensGuard system allows you to have a look on an object security from a new angle, to change an approach to the shop-window design, to add an extra security to the objects in a snap.



Shop-window protection from thefts

Modern wireless optical sensors SensGuard are much more reliable than outdated wire-connected reed switch based sensors.



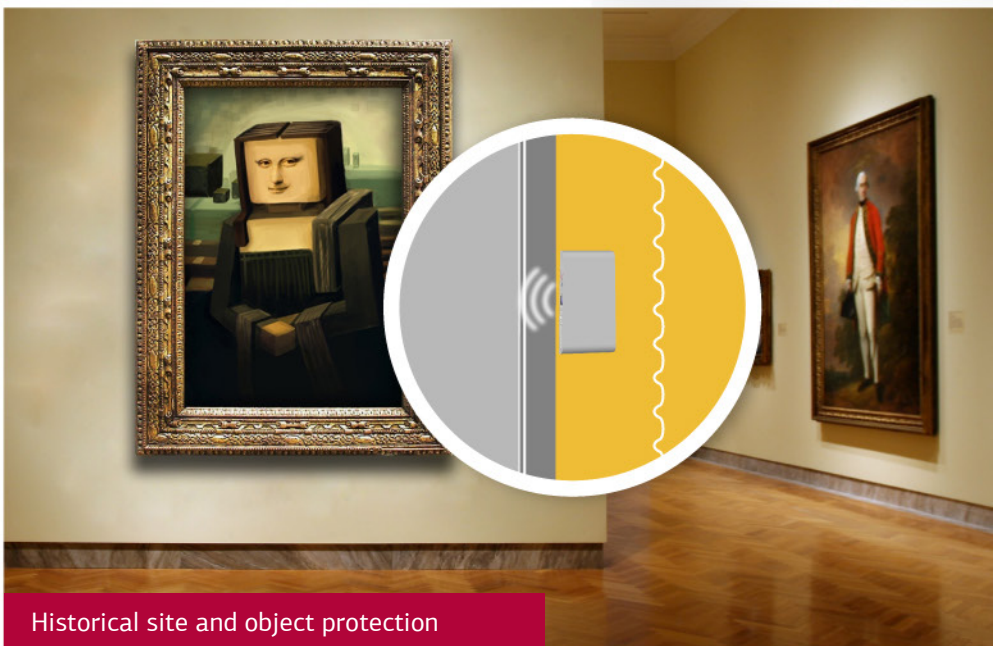
Any object protection from an unauthorized transition



Window and door protection from an unauthorized opening



Notifications about new mail



Historical site and object protection

Description:

SensGuard system consists of wireless optical sensors, alarm units and system control keychain.

Sensors are wireless, so installation process is nice and easy: sensors are glued to shop-windows and doors you want to control. No need to wire or to perform calibration.



The sensor tracks every move in the control zone. System **SensGuard** has a unique algorithm, which helps to have an extremely reliable control of the object. After detection of any move sensor passes warning on the alarm unit.

The alarm unit **SensGuard** alerts using audio and indicating lights, there is shown the number of the control zone. The device can control to 10 zones, to each of them could be plugged to 20 sensors. You may equip the alarm unit with a built-in battery for an autonomous work and with an additional storage module for statistics and log files of doors openings and closures.

You unblock the system with a small and handy keychain. It can work with one or several control zones, this gives a possibility to adjust and regulate the access levels for different people.

Advantages:



Battery life of the sensor is more than 5 years.



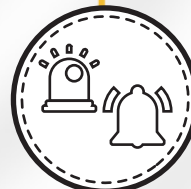
The optical sensor is protected from wrecking. It cannot be deceived with a magnet, flashing or other noises.



Wireless sensor installation – can be glued everywhere, possibility to control hardly accessible objects.



Wireless sensors can easy give additional security to any object if it is necessary.



Clear audio signal and indication lights, there is shown the number of the control zone, help to respond to an emergency situation very quickly.



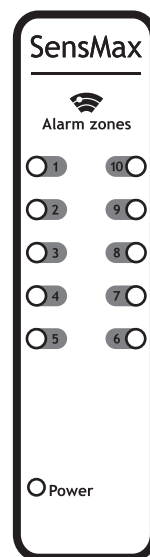
System is extremely reliable because of the expanded sensor control zone (20-30 mm) and the unique algorithm of the movement recognition.



Due to encoded radio channel (standard AES-128) no one can capture the signal and interrupt the work of the system.

Technical specification of SensGuard system

Instead of outdated wire-connected reed switch based sensors, operating on magnets, in SensGuard system we use high-tech optical wireless sensor. It helps to improve system facilities and reliability.



	Wireless optical sensor	System control keychain	Alarm unit
Dimensions	55x12x27 mm	65x35x17 mm	114x36x20 mm
Control concept	Optical	-	-
Radio signal	868 MHz	868 MHz	868 MHz
Range of communication	to 150 m	to 150 m	to 150 m
Encryption	AES-128	AES-128	AES-128
Control zone	20-30 mm	-	-
Quantity of control zones	1	10	10
Quantity of pluggable sensors	-	-	200
Power supply	Built-in	Built-in	External
Operating time	> 5 years	> 5 years	Unlimited
Quantity of pluggable units to each control zone	-	-	10

PHONE: +371 67553110
GSM: +371 28752744
E-MAIL: AG@SENSMAX.EU

ROPAZU STR. 140-404,
RIGA, LATVIA, LV-1006

